



**Intermara**  
MARINE

# REUL NA MARA

## SPECIFICATION SHEET

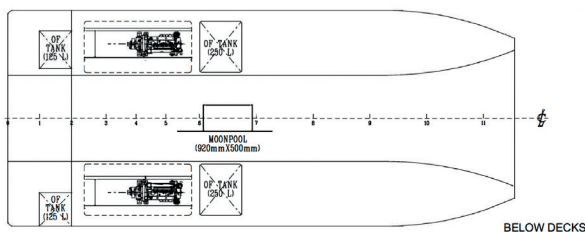
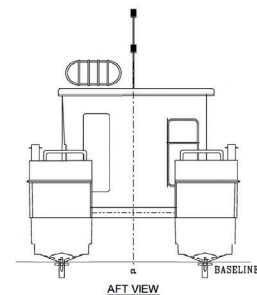
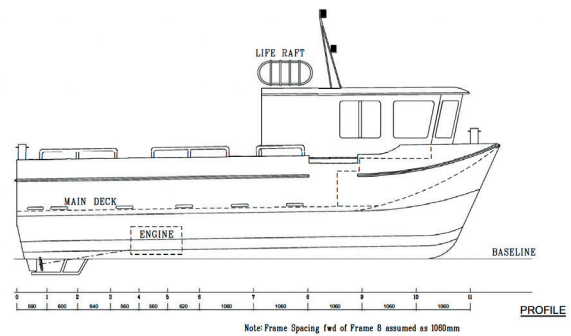
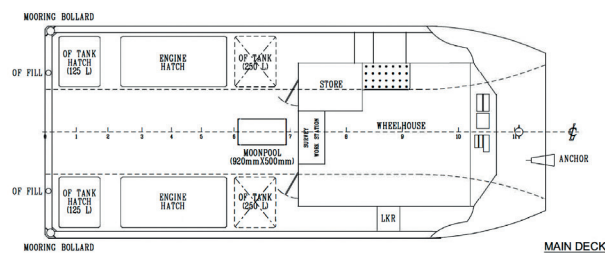
**VESSEL NAME:**  
REUL NA MARA

**VESSEL DIMENSIONS**

LOA	10 m.
Beam	4 m.
Draft	0.9 m.
Tonnage	Gross 6 (UK)

**General**

Builder AMC  
 Built 2014  
 Certification Society SCMS  
 Notation Cat 2 60nm  
 Hull material GRP



# TECHNICAL DATA SPECIFICATION

GENERAL CHARACTERISTICS	
Coding	MCA Category 2 - 60nm Offshore Day & Night
IMCA	CMID/MISW Registered
MLC	Compliant
Vessel Capacity	10PAX+2crew/ 1,000kg payload

TECHNICAL SPECIFICATION	
Navigation & Communications	2 x Garmin 7410 XSV plotter / HD radar 2 x Garmin GPS 2 x Icom IC-M506 / M323 DSC VHF's 1 x Comar Class A AIS 1 x Garmin Autopilot
Safety equipment	AED, Cat C first aid kit, SART, 2 x Emergency VHF, Jasons cradle.



VESSEL SPECIFICATION	
Bollard Pull	3,000kg approx.
Machinery	2 x Yanmar 4LHA-STP 260hp,
Fuel - Oils	Diesel 750L
Speed:Cruise/ Max	16/25 kts
Max wave height	1.5m H/s
Fuel Burn per engine	2100RPM = 12kts @ 20LPH 2500RPM = 16kts @ 30LPH 2900RPM = 20kts @ 40LPH 3300RPM = 25kts @ 50LPH

SYSTEMS & WELFARE	
1.0M X 1.0M Moonpool with survey frame and winch	
400kg SWL A-Frame with deck mount for survey winchwith survey frame	
Veripos LD5 GPS system	
2 x Over the side	
2 x survey workstations with 5 screen mounts	
Full survey rack in the wheelhouse	
Toilet	
Fridge & bean to cup coffee machine	
Full height forward cabin	
Towing points mounted aft	
Open transom aft to aid towing	

**Address:** Intermara Marine LTD  
 3 Seagate  
 Peterhead  
 AB42 1JP  
**Phone:** +44 01779 481148  
**Mobile:** +44 7738931075  
**E-mail:** info@Intermara.co.uk  
 www.intermara.co.uk

